

Cell-Tracking and Classification with Transient Fluorescent Signals

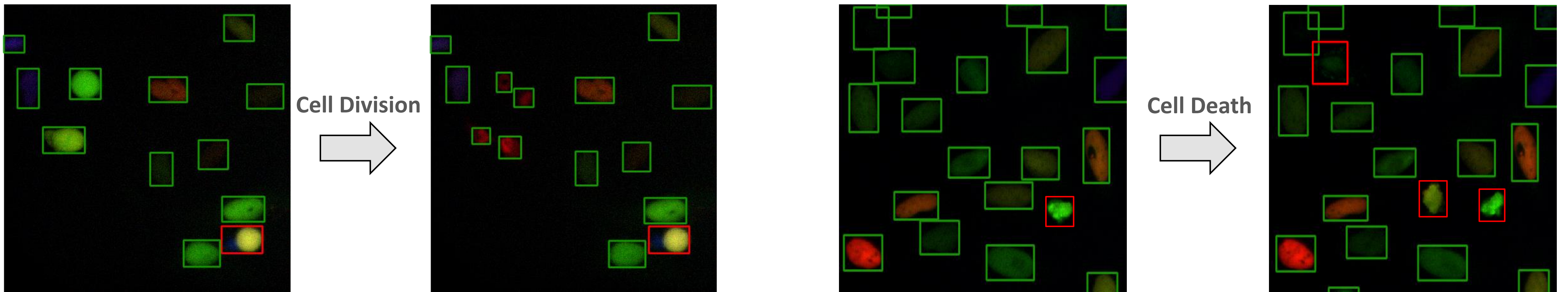
Florian Bürger^{1,2}, Adrián E. Granada^{3,4}, Katarzyna Bozek^{1,2,5}

¹Institute for Biomedical Informatics, Faculty of Medicine and University Hospital Cologne, University of Cologne, Germany
²Center for Molecular Medicine Cologne (CMMC), Faculty of Medicine and University Hospital Cologne, University of Cologne, Germany
³Charité Universitätsmedizin, Charité Comprehensive Cancer Center, Berlin, Germany
⁴German Cancer Consortium (DKTK), Berlin, Germany
⁵Cologne Excellence Cluster on Cellular Stress Responses in Aging-Associated Diseases (CECAD), University of Cologne, Germany



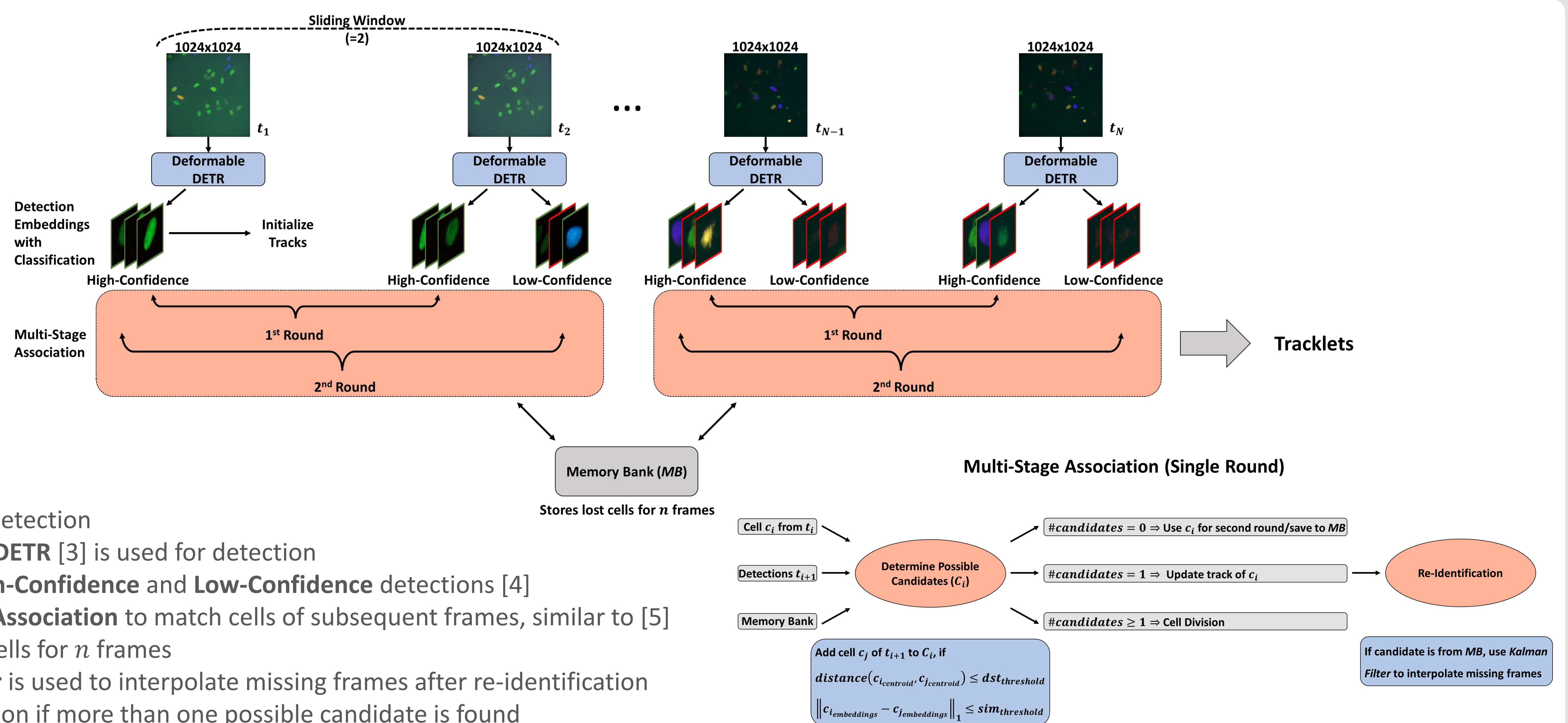
Introduction

- Time-lapse **Cell Tracking** is essential for studying cell division and death in biomedical research
- Critical for evaluating cancer cell response to treatments
- Unique challenges in comparison to traditional **Multi-Object Tracking (MOT)**:



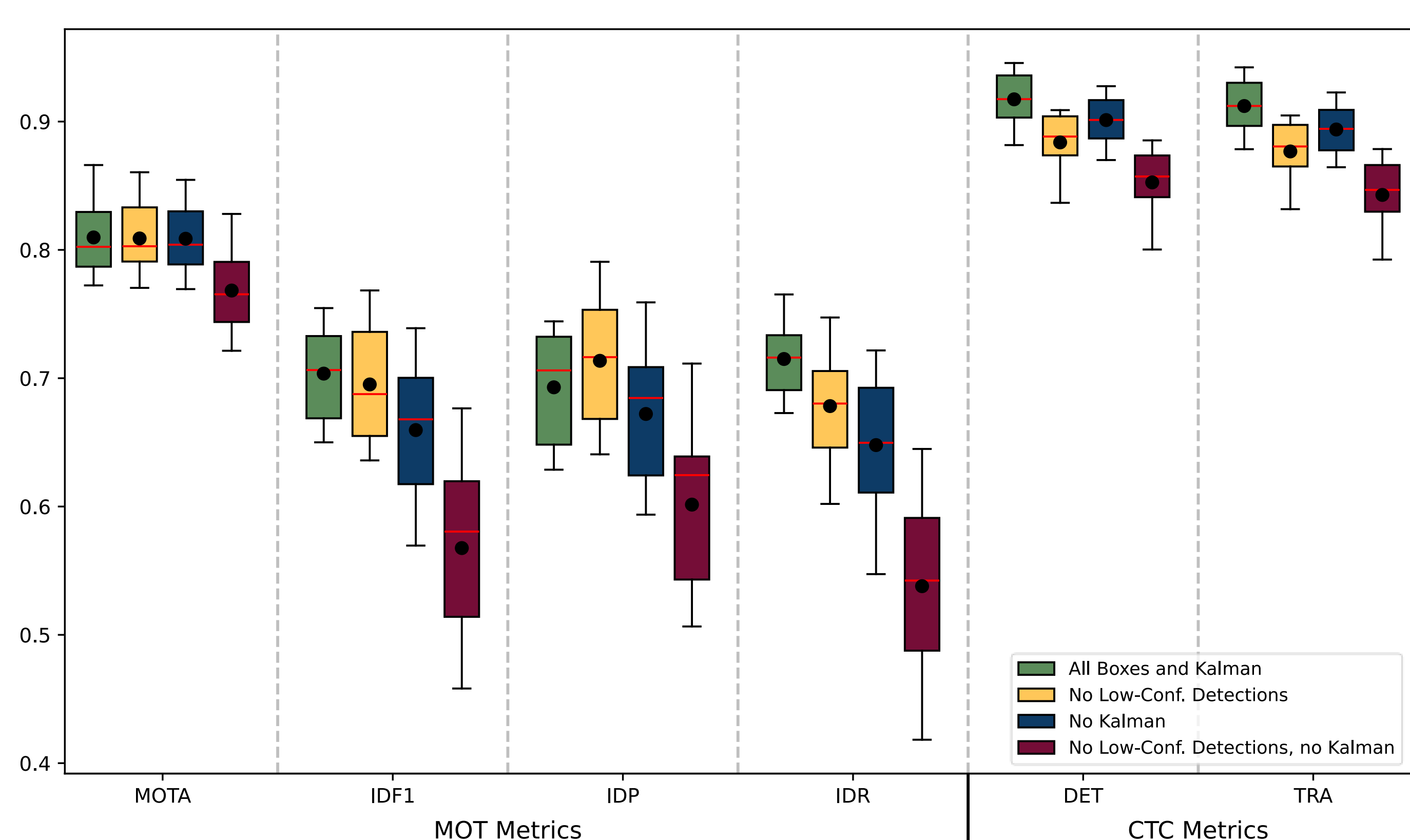
- State-of-the-art methods from the Cell Tracking Challenge [1] are benchmarked on time-lapse videos with single, constant fluorescent signals, overlooking cell death events
- We present a hybrid tracking method that classifies **living** and **dead** cells and detects cell division events
- Overcoming the issues of transient signals by interpolating tracks with Kalman Filter [2] after re-identification and the usage of Low-Confidence detections

Method



- Tracking-by-detection
- Deformable DETR** [3] is used for detection
- Usage of **High-Confidence** and **Low-Confidence** detections [4]
- Multi-Stage Association** to match cells of subsequent frames, similar to [5]
- Storing lost cells for n frames
- Kalman Filter** is used to interpolate missing frames after re-identification
- Assume division if more than one possible candidate is found

Results



Limitations

- CTC Metrics only consider continuous tracks
 - GT cells re-entering the frame require new ID assignments
- Silver-Truth bounding box annotations

Conclusion

- Detection remains the primary bottleneck
- Proposed methods mitigate challenges from transient signals
 - Incorporating a Kalman Filter and Low-Confidence detections improves performance
 - Kalman Filter alone achieves comparable MOT metric results to combining it with Low-Confidence detections, but lower CTC results

References

- <https://celltrackingchallenge.net/>
- Kálmán, R. E., A new approach to linear filtering and prediction problems, Journal of Basic Engineering (1960)
- Zhu et al., Deformable DETR: Deformable Transformers for End-to-End Object Detection, ICLR (2021)
- Zhang et al., ByteTrack: Multi-Object Tracking by Associating Every Detection Box, ECCV (2022)
- Wang et al., SMILETrack: SiMilarity LEarning for Occlusion-Aware Multiple Object Tracking, AAAI (2024)